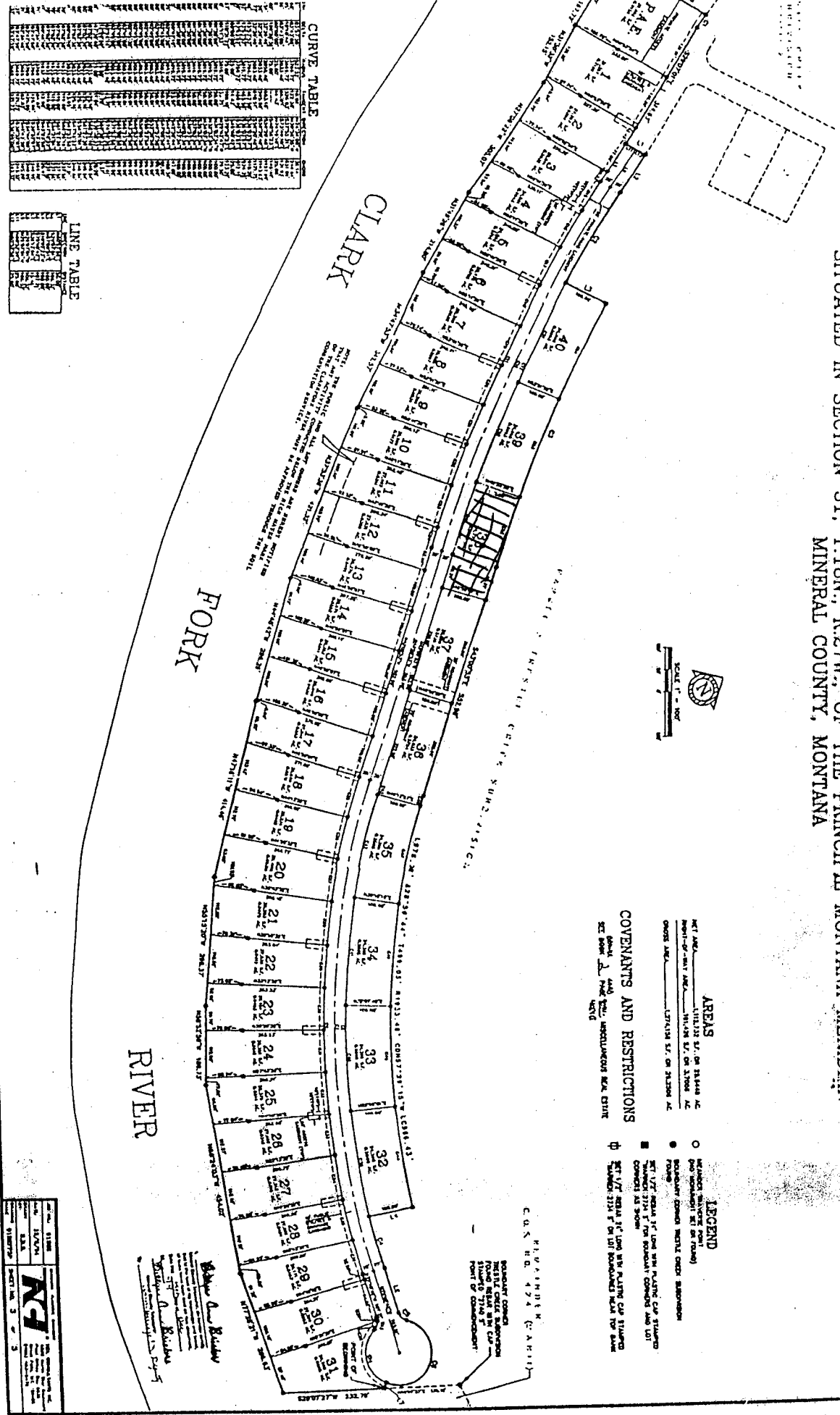


STATE OF MONTANA
TRESTLE CREEK II SUBDIVISION
 AN AMENDED PLAT OF PORTIONS OF PARCEL 3 OF TRESTLE CREEK SUBDIVISION
 SITUATED IN SECTION 31, T.18N., R.27W., OF THE PRINCIPAL MONTANA MERIDIAN
 MINERAL COUNTY, MONTANA



AREAS
 NE 1/4 SEC. 31, OR 3/4 SEC. 31, T.18N. R.27W. OF THE PRINCIPAL MONTANA MERIDIAN, MINERAL COUNTY, MONTANA
 CROSS AREA: 1.27134 AC. OR THEREON AC.

COVENANTS AND RESTRICTIONS
 See Book 2, Page 222, Mineral County, Montana

LEGEND

- NEIGHBORHOOD CENTER
- NEIGHBORHOOD CENTER
- NEIGHBORHOOD CENTER
- NEIGHBORHOOD CENTER
- ◇ NEIGHBORHOOD CENTER

CURVE TABLE

STATION	CHORD BEARING	CHORD DIST.	ARC BEARING	ARC DIST.
1	N 89° 59' 59" W	100.00	100° 00' 00"	100.00
2	N 89° 59' 59" W	100.00	100° 00' 00"	100.00
3	N 89° 59' 59" W	100.00	100° 00' 00"	100.00
4	N 89° 59' 59" W	100.00	100° 00' 00"	100.00
5	N 89° 59' 59" W	100.00	100° 00' 00"	100.00
6	N 89° 59' 59" W	100.00	100° 00' 00"	100.00
7	N 89° 59' 59" W	100.00	100° 00' 00"	100.00
8	N 89° 59' 59" W	100.00	100° 00' 00"	100.00
9	N 89° 59' 59" W	100.00	100° 00' 00"	100.00
10	N 89° 59' 59" W	100.00	100° 00' 00"	100.00
11	N 89° 59' 59" W	100.00	100° 00' 00"	100.00
12	N 89° 59' 59" W	100.00	100° 00' 00"	100.00
13	N 89° 59' 59" W	100.00	100° 00' 00"	100.00
14	N 89° 59' 59" W	100.00	100° 00' 00"	100.00
15	N 89° 59' 59" W	100.00	100° 00' 00"	100.00
16	N 89° 59' 59" W	100.00	100° 00' 00"	100.00
17	N 89° 59' 59" W	100.00	100° 00' 00"	100.00
18	N 89° 59' 59" W	100.00	100° 00' 00"	100.00
19	N 89° 59' 59" W	100.00	100° 00' 00"	100.00
20	N 89° 59' 59" W	100.00	100° 00' 00"	100.00
21	N 89° 59' 59" W	100.00	100° 00' 00"	100.00
22	N 89° 59' 59" W	100.00	100° 00' 00"	100.00
23	N 89° 59' 59" W	100.00	100° 00' 00"	100.00
24	N 89° 59' 59" W	100.00	100° 00' 00"	100.00
25	N 89° 59' 59" W	100.00	100° 00' 00"	100.00
26	N 89° 59' 59" W	100.00	100° 00' 00"	100.00
27	N 89° 59' 59" W	100.00	100° 00' 00"	100.00
28	N 89° 59' 59" W	100.00	100° 00' 00"	100.00
29	N 89° 59' 59" W	100.00	100° 00' 00"	100.00
30	N 89° 59' 59" W	100.00	100° 00' 00"	100.00
31	N 89° 59' 59" W	100.00	100° 00' 00"	100.00

LINE TABLE

STATION	CHORD BEARING	CHORD DIST.	ARC BEARING	ARC DIST.
1	N 89° 59' 59" W	100.00	100° 00' 00"	100.00
2	N 89° 59' 59" W	100.00	100° 00' 00"	100.00
3	N 89° 59' 59" W	100.00	100° 00' 00"	100.00
4	N 89° 59' 59" W	100.00	100° 00' 00"	100.00
5	N 89° 59' 59" W	100.00	100° 00' 00"	100.00
6	N 89° 59' 59" W	100.00	100° 00' 00"	100.00
7	N 89° 59' 59" W	100.00	100° 00' 00"	100.00
8	N 89° 59' 59" W	100.00	100° 00' 00"	100.00
9	N 89° 59' 59" W	100.00	100° 00' 00"	100.00
10	N 89° 59' 59" W	100.00	100° 00' 00"	100.00
11	N 89° 59' 59" W	100.00	100° 00' 00"	100.00
12	N 89° 59' 59" W	100.00	100° 00' 00"	100.00
13	N 89° 59' 59" W	100.00	100° 00' 00"	100.00
14	N 89° 59' 59" W	100.00	100° 00' 00"	100.00
15	N 89° 59' 59" W	100.00	100° 00' 00"	100.00
16	N 89° 59' 59" W	100.00	100° 00' 00"	100.00
17	N 89° 59' 59" W	100.00	100° 00' 00"	100.00
18	N 89° 59' 59" W	100.00	100° 00' 00"	100.00
19	N 89° 59' 59" W	100.00	100° 00' 00"	100.00
20	N 89° 59' 59" W	100.00	100° 00' 00"	100.00
21	N 89° 59' 59" W	100.00	100° 00' 00"	100.00
22	N 89° 59' 59" W	100.00	100° 00' 00"	100.00
23	N 89° 59' 59" W	100.00	100° 00' 00"	100.00
24	N 89° 59' 59" W	100.00	100° 00' 00"	100.00
25	N 89° 59' 59" W	100.00	100° 00' 00"	100.00
26	N 89° 59' 59" W	100.00	100° 00' 00"	100.00
27	N 89° 59' 59" W	100.00	100° 00' 00"	100.00
28	N 89° 59' 59" W	100.00	100° 00' 00"	100.00
29	N 89° 59' 59" W	100.00	100° 00' 00"	100.00
30	N 89° 59' 59" W	100.00	100° 00' 00"	100.00
31	N 89° 59' 59" W	100.00	100° 00' 00"	100.00

\$ 45,000

Maple & Blodgett
 Surveyors
 1000 1st Avenue S.W.
 Helena, Montana 59601
 Phone: 442-1111

DATE: 11/15/2011
 SHEET: 3 OF 3

RTI